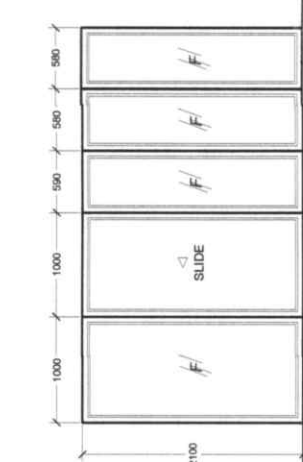


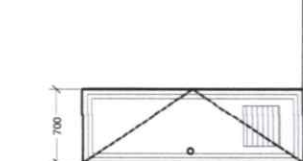
**W1**

1/4" THK. ONE WAY GLASS (BLUE)  
AWNING GLASS WINDOW  
ON ALUMINUM ANALOK FRAME WHITE COATED  
LOCATION: AS SHOWN ON PLAN  
QTY: 1 SET



**D5**

SLIDING ONE WAY GLASS DOOR W/  
FIXED GLASS (BLUE) ON ANALOK  
ALUMINUM FRAME WHITE COATED  
LOCATION: AS SHOWN ON PLAN  
QTY: 1 SET



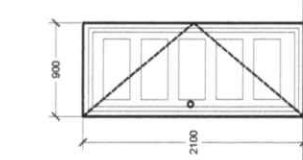
**D4**

PVC DOOR W. LOUVER  
LOCATION: AS SHOWN ON PLAN  
QTY: 2 SETS



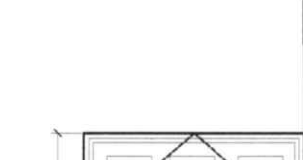
**D3**

PANEL TYPE DOOR  
LOCATION: AS SHOWN ON PLAN  
QTY: 1 SET



**D2**

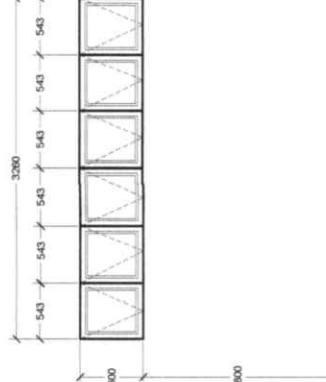
PANEL TYPE DOOR  
LOCATION: AS SHOWN ON PLAN  
QTY: 2 SETS



**D1**

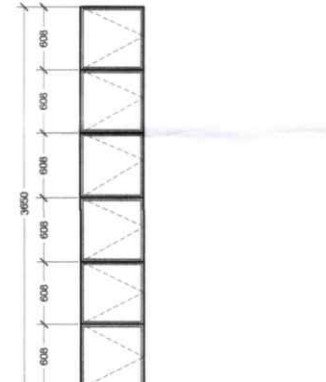
DOUBLE SWING ONE WAY GLASS  
DOOR (BLUE) ON ANALOK ALUMINUM  
FRAME WHITE COATED  
LOCATION: AS SHOWN ON PLAN  
QTY: 1 SET

**SCHEDULE OF DOORS**  
SCALE: 1:40 METER



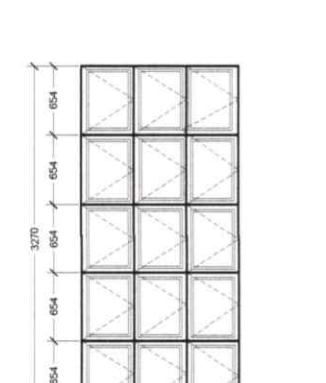
**W4a**

1/4" THK. ONE WAY GLASS (BLUE)  
AWNING GLASS WINDOW  
ON ALUMINUM ANALOK FRAME WHITE COATED  
LOCATION: AS SHOWN ON PLAN  
QTY: 1 SET



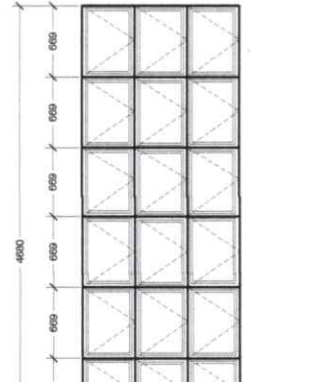
**W4**

1/4" THK. ONE WAY GLASS (BLUE)  
AWNING GLASS WINDOW  
ON ALUMINUM ANALOK FRAME WHITE COATED  
LOCATION: AS SHOWN ON PLAN  
QTY: 3 SETS



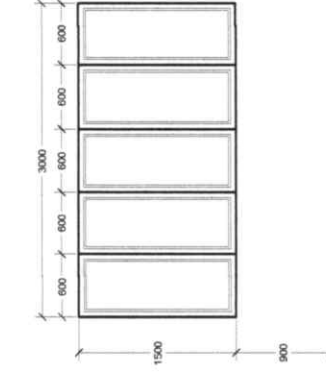
**W3**

1/4" THK. ONE WAY GLASS (BLUE)  
AWNING GLASS WINDOW  
ON ALUMINUM ANALOK FRAME WHITE COATED  
LOCATION: AS SHOWN ON PLAN  
QTY: 1 SET



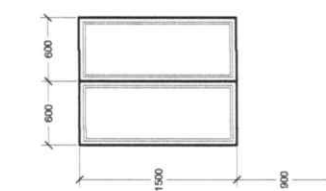
**W2**

1/4" THK. ONE WAY GLASS (BLUE)  
AWNING GLASS WINDOW  
ON ALUMINUM ANALOK FRAME WHITE COATED  
LOCATION: AS SHOWN ON PLAN  
QTY: 1 SET



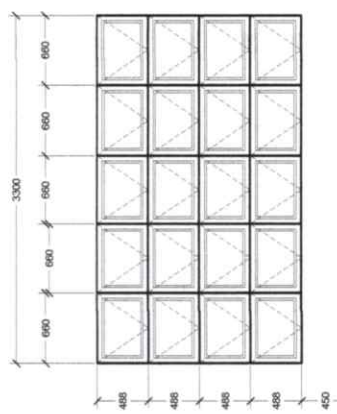
**W6**

1/4" THK. ONE WAY GLASS (BLUE)  
SLIDING GLASS WINDOW  
ON ALUMINUM ANALOK FRAME WHITE COATED  
LOCATION: AS SHOWN ON PLAN  
QTY: 6 SETS



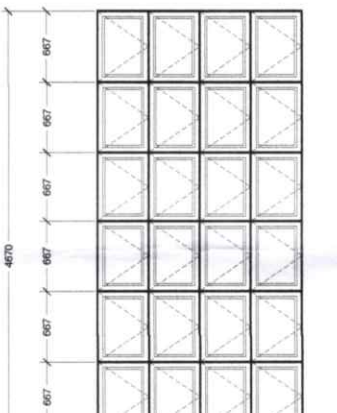
**W5**

1/4" THK. ONE WAY GLASS (BLUE)  
SLIDING GLASS WINDOW  
ON ALUMINUM ANALOK FRAME WHITE COATED  
LOCATION: AS SHOWN ON PLAN  
QTY: 1 SET



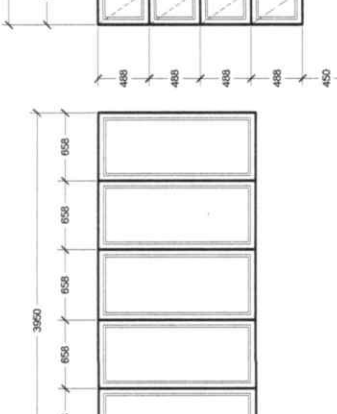
**W11**

1/4" THK. ONE WAY GLASS (BLUE)  
AWNING GLASS WINDOW  
ON ALUMINUM ANALOK FRAME WHITE COATED  
LOCATION: AS SHOWN ON PLAN  
QTY: 1 SET



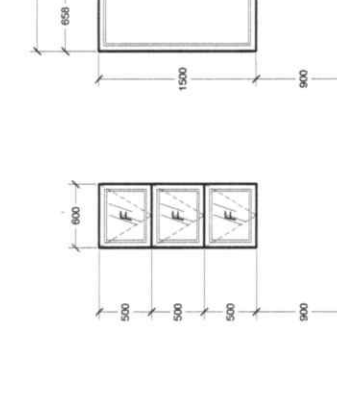
**W10**

1/4" THK. ONE WAY GLASS (BLUE)  
AWNING GLASS WINDOW  
ON ALUMINUM ANALOK FRAME WHITE COATED  
LOCATION: AS SHOWN ON PLAN  
QTY: 1 SET



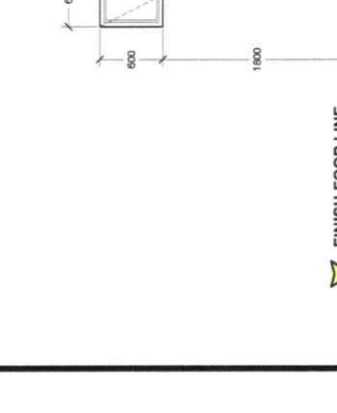
**W9**

1/4" THK. ONE WAY GLASS (BLUE)  
SLIDING GLASS WINDOW  
ON ALUMINUM ANALOK FRAME WHITE COATED  
LOCATION: AS SHOWN ON PLAN  
QTY: 1 SET



**W8**

1/4" THK. ONE WAY GLASS (BLUE)  
FIXED GLASS WINDOW  
ON ALUMINUM ANALOK FRAME WHITE COATED  
LOCATION: AS SHOWN ON PLAN  
QTY: 3 SETS



**W7**

1/4" THK. ONE WAY GLASS (BLUE)  
AWNING GLASS WINDOW  
ON ALUMINUM ANALOK FRAME WHITE COATED  
LOCATION: AS SHOWN ON PLAN  
QTY: 4 SETS

FINISH FLOOR LINE

**W13**

1/4" THK. ONE WAY GLASS (BLUE)  
SLIDING GLASS WINDOW  
ON ALUMINUM ANALOK FRAME WHITE COATED  
LOCATION: AS SHOWN ON PLAN  
QTY: 3 SETS

**W12**

1/4" THK. ONE WAY GLASS (BLUE)  
SLIDING GLASS WINDOW  
ON ALUMINUM ANALOK FRAME WHITE COATED  
LOCATION: AS SHOWN ON PLAN  
QTY: 2 SETS

**SCHEDULE OF WINDOWS**  
SCALE: 1:40 METER



PROJECT TITLE:

**PROPOSED CONSTRUCTION OF DA TRAINING CENTER**

LOCATION: CABATUAN, ILOILO

CHECKED BY:

**RIC ARMANDO H. VALENZUELA**  
MUNICIPAL ENGINEER

APPROVED BY:

**HON. ELIZABETH G. RUENO**  
MUNICIPAL MAYOR

SHEET CONTENTS

AS SHOWN

SHEET NO.

**A 4**

CADD BY: CORTIZ  
PREPARED BY:  
DATE: