



PROJECT TITLE:  
**EXTENSION OF RURAL HEALTH UNIT**

LOCATION: CABATUAN, ILOILO

SEC. 33  
DRAWINGS, SPECIFICATIONS, DULY SIGNED & SEALED OR STAMPED, AS AN INSTRUMENTS OF SERVICE, ARE THE PROPERTY & DOCUMENTS OF THE ARCHITECT. WHETHER THE OBJECT FOR WHICH THEY ARE MADE IS EXECUTED OR NOT, IT SHALL BE UNLAWFUL FOR ANY PERSON, WITHOUT THE WRITTEN CONSENT OF THE ARCHITECT OR AUTHOR OF SAID DOCUMENTS TO REPRODUCE, COPY, REPRODUCE, OR IN ANY MANNER FOR USE IN THE REPRODUCTION OF AND FOR OTHER PROJECTS OF BUILDINGS, WHETHER EXECUTED PARTIALLY OR IN WHOLE.

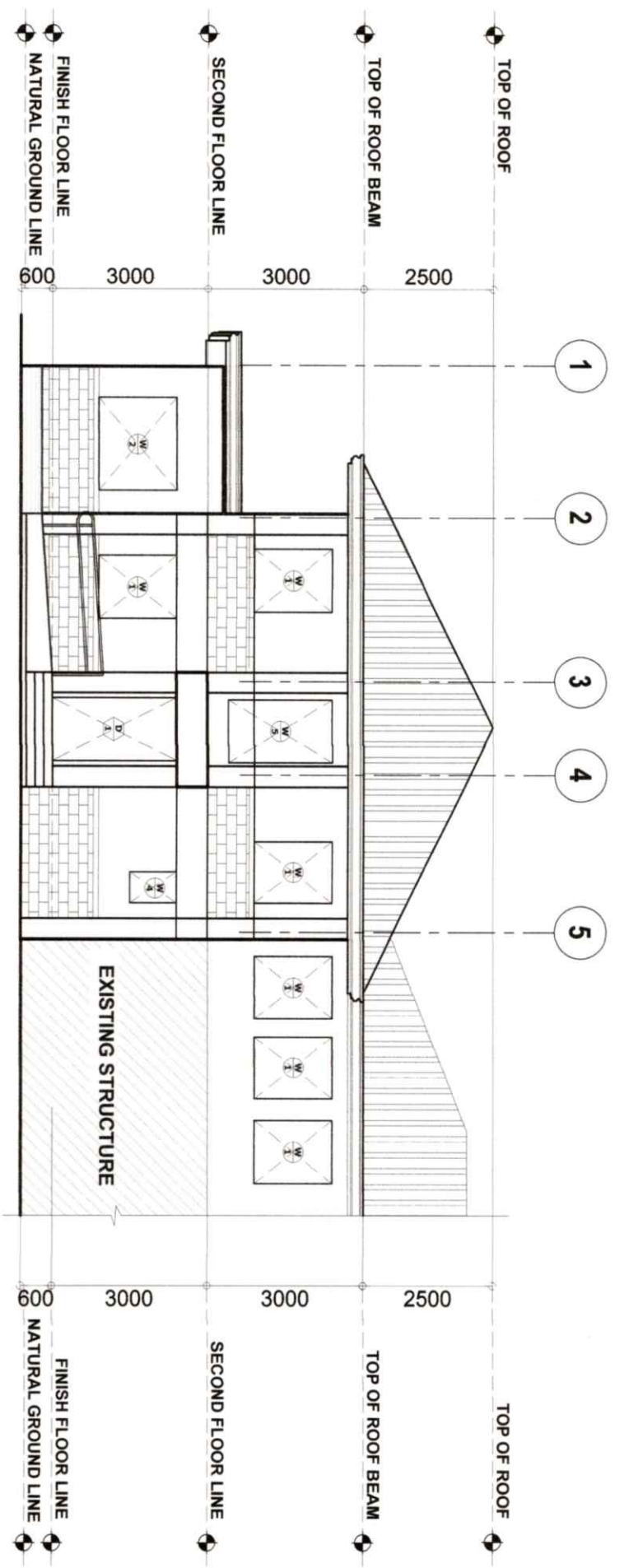
R.A. 9286  
PREPARED BY:  
**JOSE JOEL S. PARRIS, JR.**  
BUILDING INSPECTOR

CHECKED BY:  
**RIC ARMANDO T. VALENZUELA**  
MUNICIPAL ENGINEER

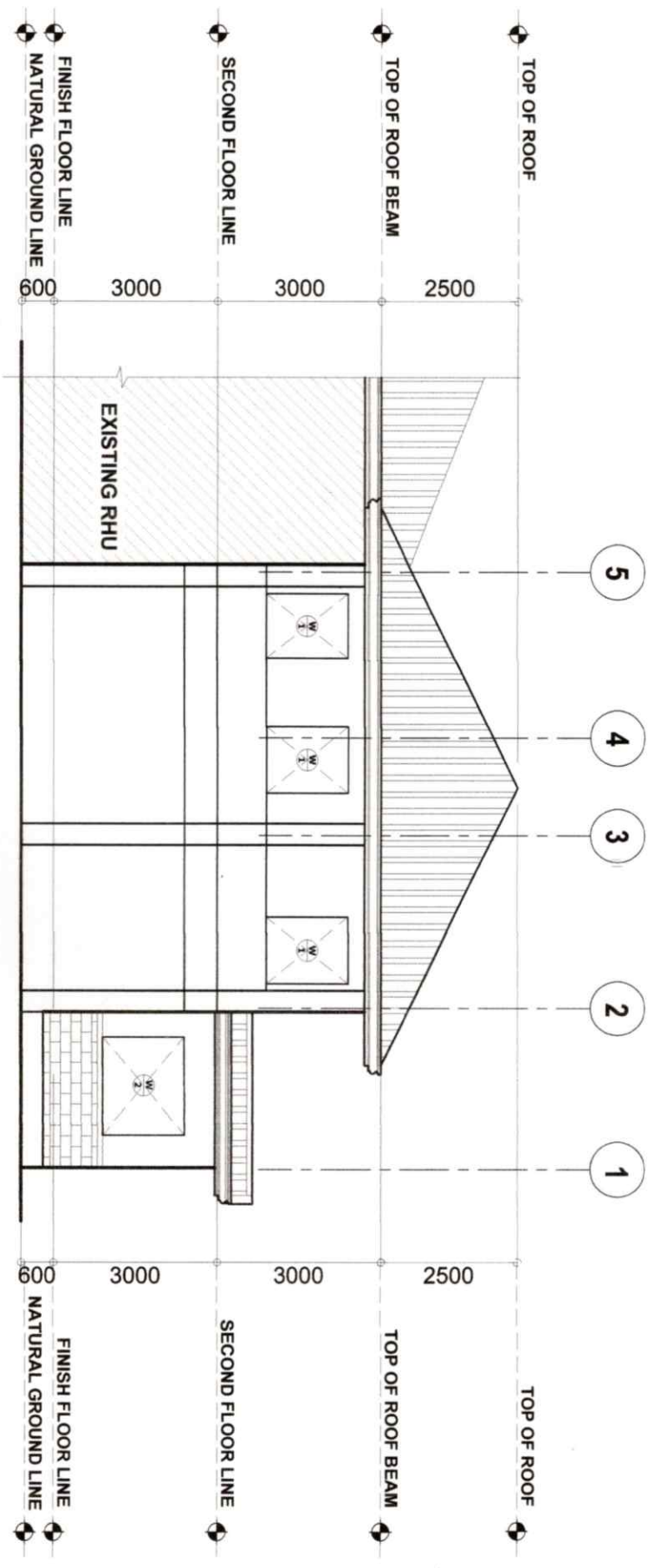
APPROVED BY:  
**HON. ELIZALDE G. UJEYO**  
MUNICIPAL MAYOR

SHEET CONTENTS:  
AS SHOWN

SHEET NO.:  
**A-4**  
Checked by: JOHN ROYEL ORTIZ  
DATE:



**FRONT ELEVATION**  
SCALE: 1:120 METER



**REAR ELEVATION**  
SCALE: 1:100 METER

REPUBLIC OF THE PHILIPPINES  
OFFICE OF THE BUILDING  
OFFICIAL  
MUNICIPALITY OF CABATUAN

BUILDING OFFICIAL

ARCHITECTURAL