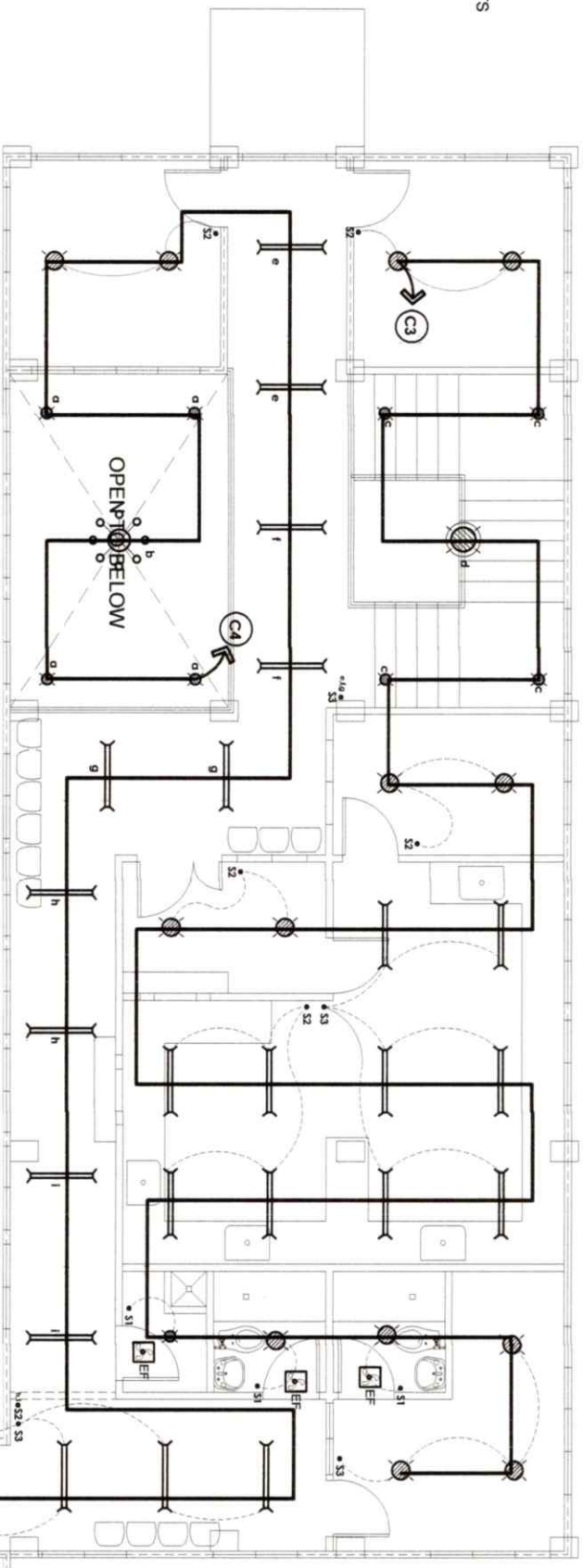


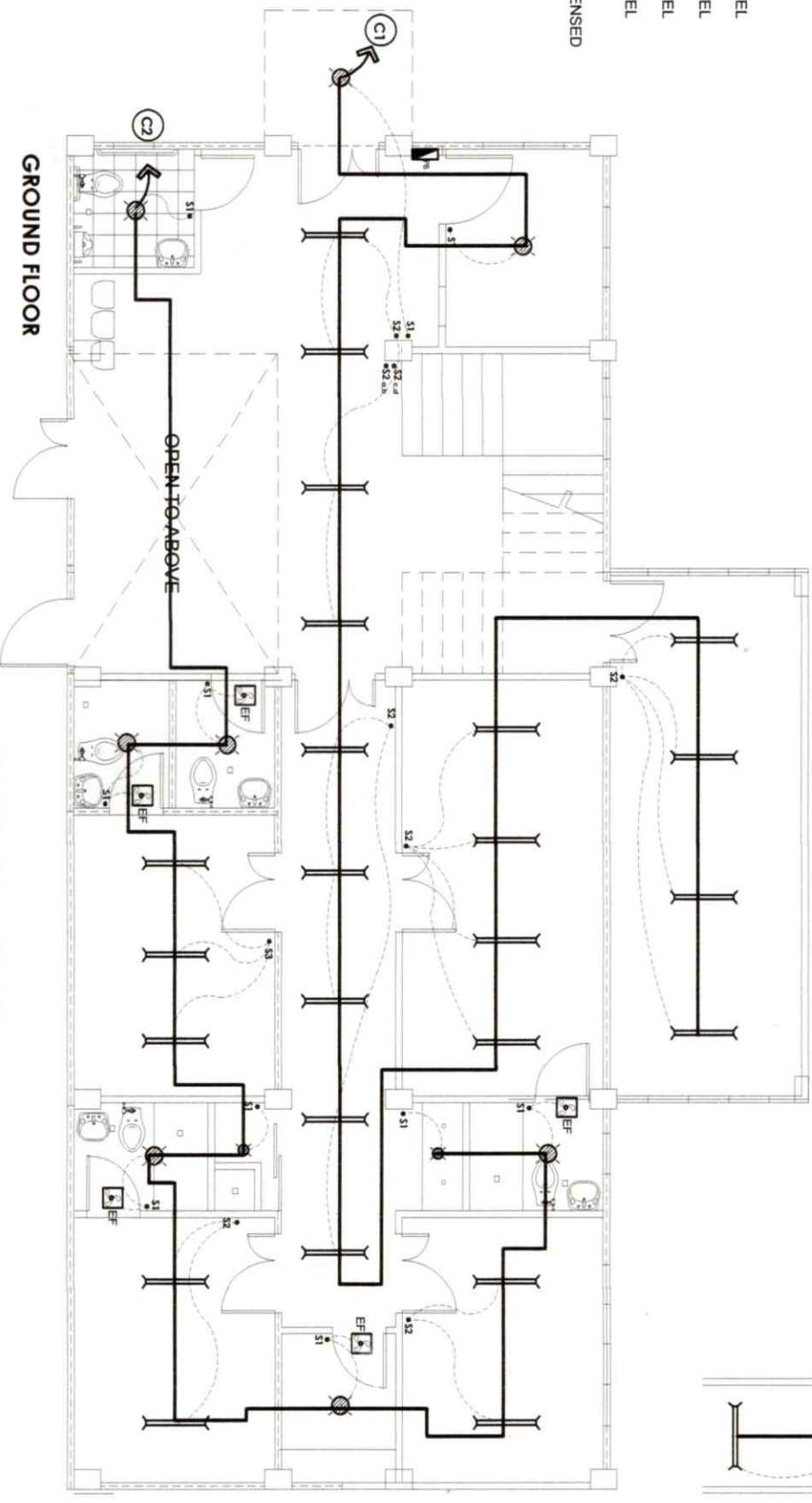
ELECTRICAL SPECIFICATIONS:

- E-1 ALL WORKS SHALL BE DONE IN ACCORDANCE WITH THE LATEST EDITION OF THE PHILIPPINE ELECTRICAL CODE, THE RULES AND REGULATIONS OF THE LOCAL ENFORCING AGENCY OF THE MUNICIPALITY OF LEGANES, AND THE REQUIREMENTS OF PANAY ELECTRIC COMPANY, INC. (PECO).
- E-2 NATURE OF SERVICE SHALL BE 230V, SINGLE PHASE, 60HZ
- E-3 TYPE OF WIRING SHALL BE THW, CU FOR SERVICE ENTRANCE IN RIGID METAL CONDUIT AND THHN CU FOR FEEDER, SUB FEEDER, CIRCUIT LINE AND SWITCH LINE IN NON METALLIC METAL CONDUIT.
- E-4 MINIMUM SIZE OF LIVE AND GROUND CONDUCTOR SHALL BE AS FOLLOWS :
 SERVICE ENTRANCE 2 NO. 14.0 THHN CU WIRE
 LIGHTING CIRCUIT 2 NO. 3.5 MM.² THHN CU WIRE
 LIGHTING POLE SWITCHES 2 NO. 2.0 MM.² THHN CU WIRE
 DUPLEX CONVENIENCE OUTLET 2 NO. 3.5 MM.² THHN CU WIRE
 SPECIAL PURPOSE OUTLET 2 NO. 5.5 MM.² THHN CU WIRE
 ALL OTHERS AS SPECIFIED
- E-5 MINIMUM MOUNTING HEIGHTS FOR THE FOLLOWING SHALL NOT BE LESS THAN AS FOLLOWS :
 POWER PANEL BOARD NOT LESS THAN 1.60M ON PANELBOARD
 CENTER ABOVE FLOOR LEVEL
 POLE SWITCHES NOT LESS THAN 1.20M ABOVE FLOOR LEVEL
 DUPLEX CONVENIENCE OUTLET NOT LESS THAN .30M ABOVE FLOOR LEVEL
 AIR CONDITIONING UNIT OUTLET NOT LESS THAN 1.20M ABOVE FLOOR LEVEL
 OTHERS NOT LESS THAN .30M ABOVE FLOOR LEVEL
- E-6 ALL WORKS SHALL BE DONE IN UNDER THE DIRECT SUPERVISION OF A DULLY LICENSED ELECTRICAL ENGINEER OR REGISTERED MASTER ELECTRICIAN

SECOND FLOOR



GROUND FLOOR



LIGHTING LAY-OUT

SCALE: 1:100 METER

REPUBLIC OF THE PHILIPPINES
 OFFICE OF THE BUILDING
 OFFICIAL
 MUNICIPALITY OF CABATUAN

BUILDING OFFICIAL

LEGEND:

- LIGHTING OUTLET LINE
- POWER LINE
- 18W FLUORESCENT LAMP
- 100W DECORATIVE LAMP
- 25W CIRCULAR LAMP
- 12W PINLIGHT
- 5W PINLIGHT
- DUPLEX CONVENIENCE OUTLET
- SPECIAL PURPOSE OUTLET
- AIRCON OUTLET
- REFRIGERATOR OUTLET
- DUPLEX CONVENIENCE OUTLET
- WEATHER PROOF
- MOTOR PUMP
- EXHAUST FAN
- SINGLE SWITCH
- DUPLEX SWITCH
- THREE WAY SWITCH
- CABLE TV OUTLET
- TELEPHONE
- AIRCON OUTLET
- CIRCUIT HOMERUN
- CIRCUIT BREAKER
- EXHAUST FAN
- PANEL BOARD
- SMOKE ALARM DETECTOR, BATTERY OPERATED
- FIRE EXTINGUISHER
- EMERGENCY LIGHT



PROJECT TITLE:
EXTENSION OF RURAL HEALTH UNIT

LOCATION: CABATUAN, ILOILO

SEC. 33 R.A. 9266

PREPARED BY:
JOSE JOEL S. PARIS, JR.
 BUILDING INSPECTOR

CHECKED BY:
RIC ARMANDO T. VALENZUELA
 MUNICIPAL ENGINEER

APPROVED BY:
HON. EVELYN DE ALAYO
 MUNICIPAL MAYOR

SHEET CONTENTS SHEET NO.
 AS SHOWN **E-1**

Checked by: JOHN ROSEL CORTIZ
 DATE: