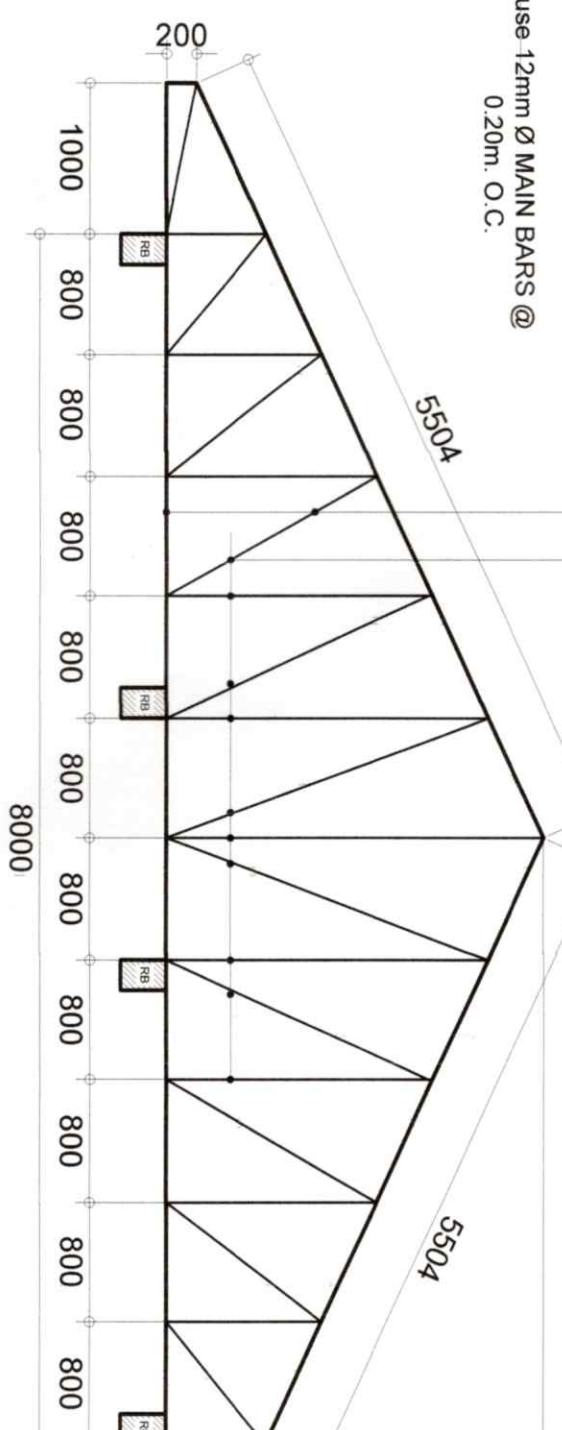
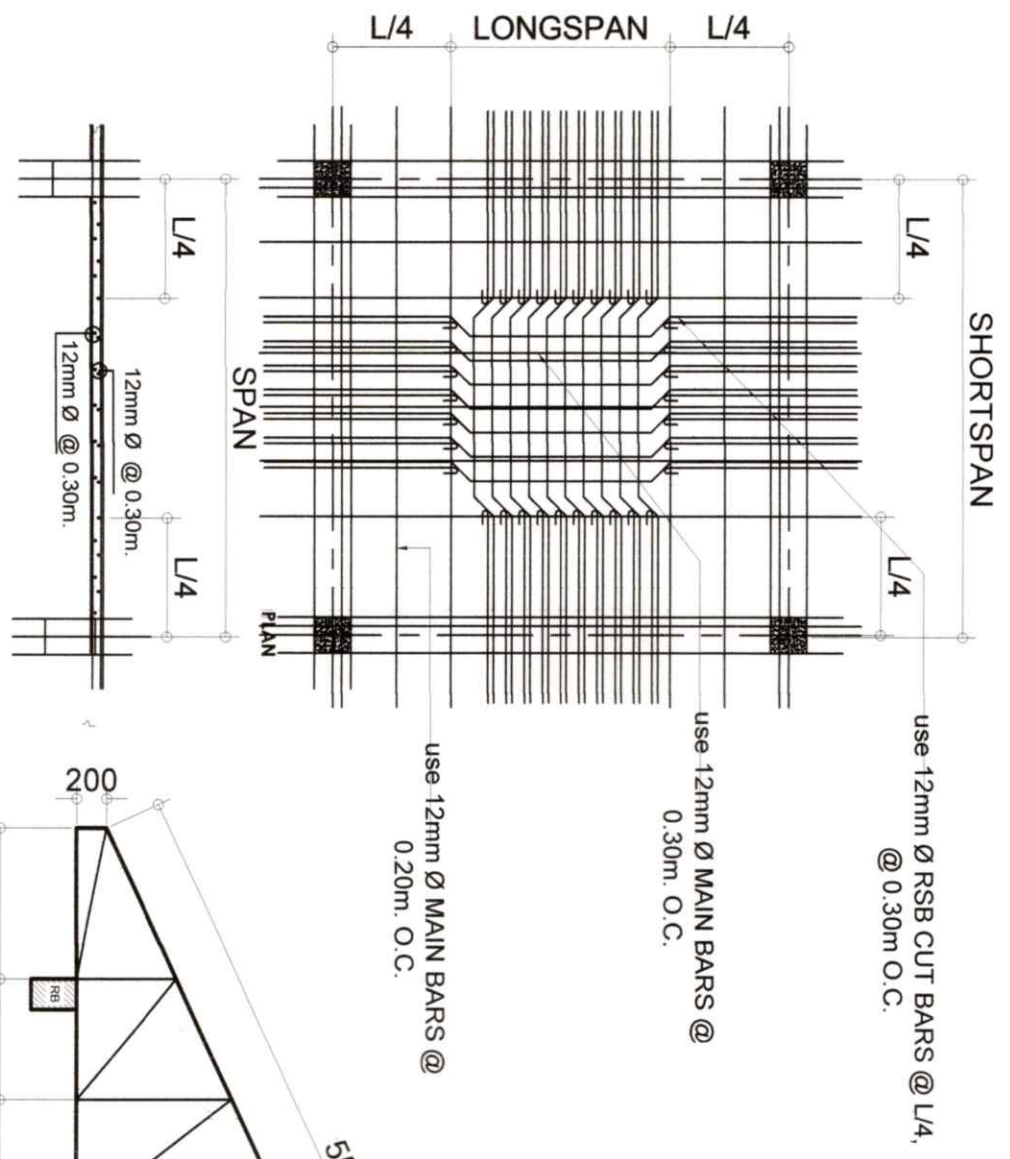
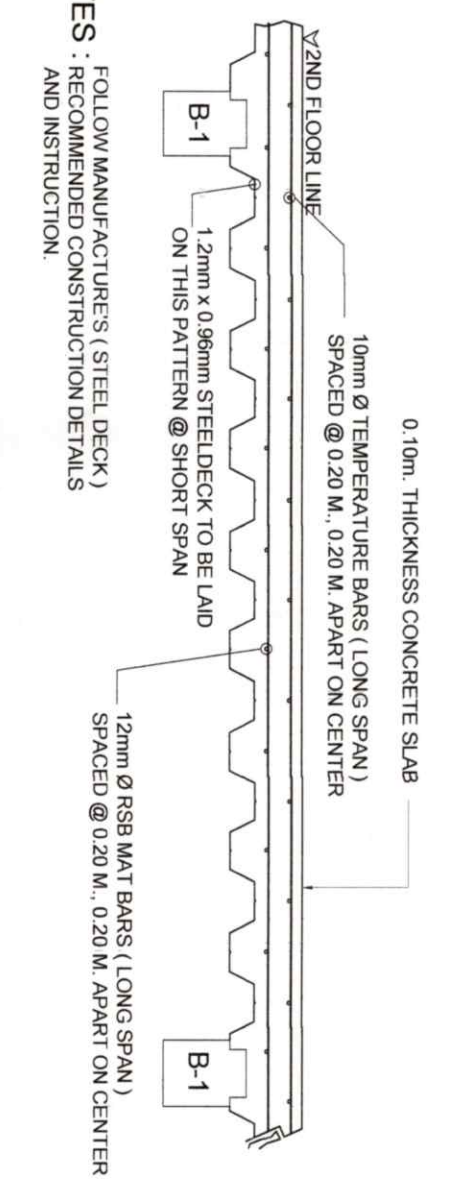
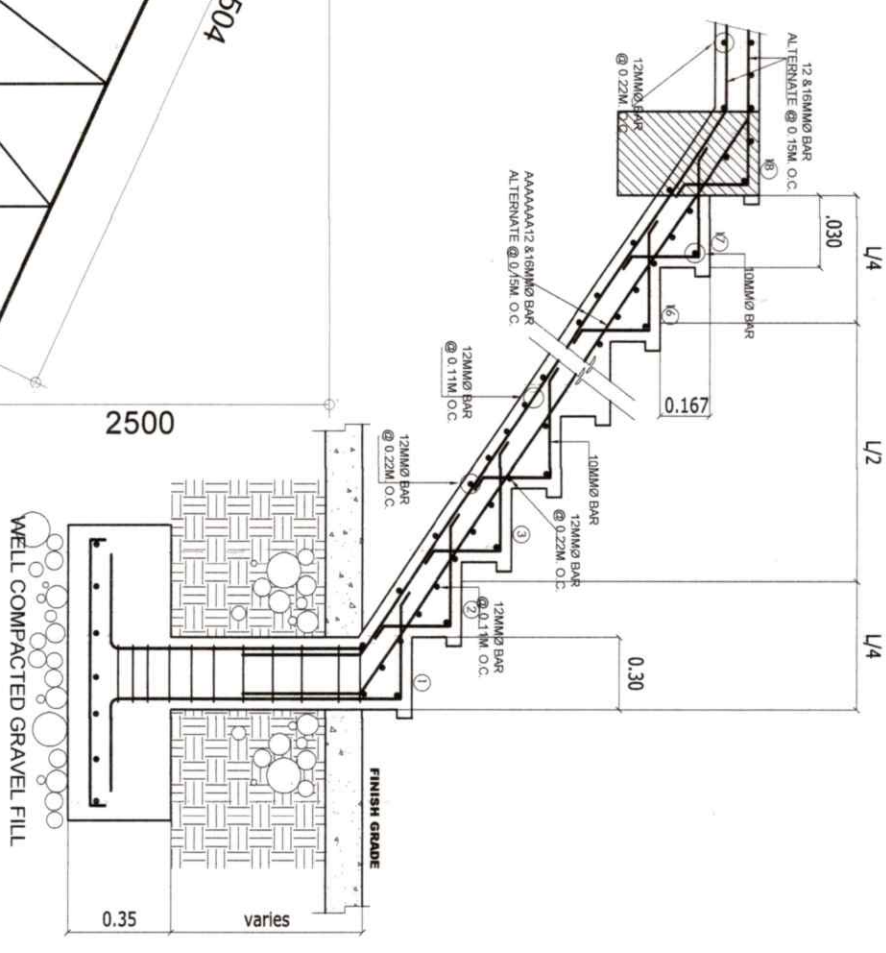


NOTES : FOLLOW MANUFACTURER'S (STEEL DECK) RECOMMENDED CONSTRUCTION DETAILS AND INSTRUCTION.

SLAB SECTION W/ STEEL DECK
DRAWN NOT TO SCALE



STAIR SECTION
SCALE: NTS



REPUBLIC OF THE PHILIPPINES
OFFICE OF THE BUILDING
OFFICIAL
MUNICIPALITY OF CABATUAN

BUILDING OFFICIAL

STRUCTURAL



PROJECT TITLE: EXTENSION OF RURAL HEALTH UNIT	SEC. 33 DRAWINGS, SPECIFICATIONS, DETAILS, SEALS OR STAMPS, AS INSTRUMENTS OF SERVICE ARE THE PROPERTY & DOCUMENTS OF THE ARCHITECT. WHETHER THE OBJECT FOR WHICH THEY ARE MADE IS EXECUTED OR NOT, IT SHALL BE UNLAWFUL FOR ANY PERSON, WITHOUT THE WRITTEN CONSENT OF THE ARCHITECT, TO REPRODUCE OR TO MAKE COPIES OF ANY PART OF THE DRAWINGS, SPECIFICATIONS, DETAILS, SEALS OR STAMPS FOR USE IN THE REPRODUCTION OF AND FOR OTHER PROJECTS OF BUILDINGS, WHETHER EXECUTED PARTLY OR IN WHOLE.	R.A. 9266	PREPARED BY: JOSE JOEL B. PARIS, JR. BUILDING INSPECTOR	CHECKED BY: RIC ARMANDO T. VALENZUELA MUNICIPAL ENGINEER	APPROVED BY: HON. ELIZALDE J. AUYEYO MUNICIPAL MAYOR	SHEET CONTENTS AS SHOWN	SHEET NO. S-2
LOCATION: CABATUAN, ILOILO						Checked by: JOHN ROVEL CORTIZ DATE:	